



# SonixTOUCH EMED

Ultrasound that's ready  
when it matters the most



SonixTOUCH is a state of the art, lightweight ultrasound system. Our proprietary emergency medicine specific software and touch screen user interface combine for a dramatic increase in system ease of use.

This flexible user interface assists Emergency Medicine physicians at all experience levels to quickly perform ultrasound examinations critical for patient care.



# A user interface customized for emergency medicine

SonixTOUCH is specifically designed for today's emergency department. We have simplified the user interface by displaying only the buttons needed for the task at hand.



## Image Quality

Ultrasonix provides high-end image quality in a small portable system using advanced imaging technologies and post processing including Spatial Compounding, Pulse Inversion Harmonics & Speckle Reduction.

## Ease of Use

Our emergency medicine presets coupled with our touch screen user interface will allow faster start to scan times for emergency physicians.

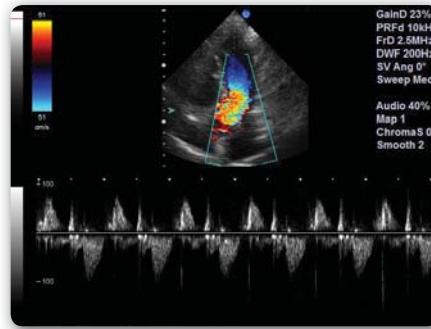
## Portable and Compact Body

SonixTOUCH is lightweight and small enough to maneuver into the tightest of patient areas. Our optional battery allows for up to 90 minutes of extended operation. With no startup time, the SonixTOUCH is always ready for your patients.

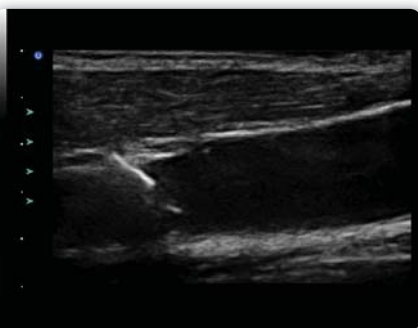
## Clinical Images with Advanced Features



**FAST Exam** – Quickly visualize free fluid in the abdomen and pelvis utilizing excellent image quality and touch screen ease of use.



**Advanced Cardiac Features** - Assess and monitor cardiac anatomy and pathology non-invasively with advanced imaging modes.



**Vascular Access** - High resolution imaging shows the needle tip in the internal jugular vein. Sensitive color flow doppler is available to help with blood vessel differentiation.



**Early Intrauterine Pregnancy** – High resolution endovaginal imaging provides definitive results to rule out ectopic pregnancies.

## General Specifications

### Exam Types:

- FAST
- Cardiac
- OB
- Renal
- Biliary
- Abd Aorta
- Bladder
- DVT
- Procedure
- Vascular Access
- Foreign Body
- Thoracic

### Imaging Modes:

- B-Mode
- Power Doppler
- Color Doppler
- M-Mode
- PW Doppler
- CW Doppler

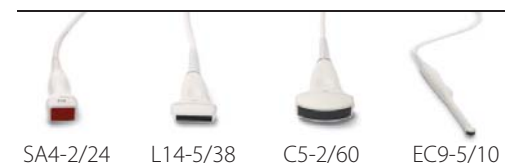
### Imaging Features:

- Beam Steer
- Compounding
- Pulse Inversion Harmonics
- Panoramic Imaging
- Trapezoidal Imaging
- Extended Pulse Imaging

### Accessories:

- B/W printer
- Accessory tray
- Biopsy guides
- Barcode reader
- User configurable worksheets.
- Credentialing
- SonixHUB data management

### Transducers:



For more information call 1-866-437-9508 or visit [www.ultrasonix.com/emed](http://www.ultrasonix.com/emed)

© Ultrasonix Medical Corporation — All rights reserved. 00.050.042 Rev. B