



Improve results with revolutionary needle guidance and freehand elastography

SonixTOUCH
for *Breast* Imaging



A user interface customized for breast imaging

Freehand Elastography

Take advantage of this new technique to measure tissue stiffness. Our unique 2D Color Map uses special exclusion algorithms to clearly highlight stiff tissue in real time.

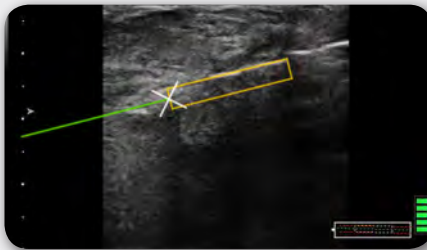
Save time with presets

Our intuitive touch screen user interface offers breast imaging presets for faster start-to-scan times. Or customize your own settings.

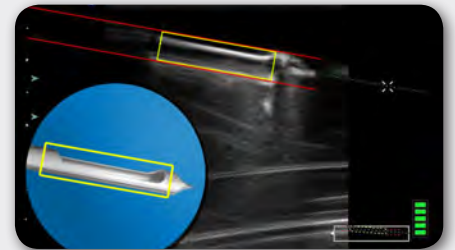


SonixGPS 3D Guidance Positioning System – a breakthrough in breast biopsies

A revolutionary advancement in needle visualization, SonixGPS lets you see where your needle will end up before inserting it into tissue. You can accurately track the entire needle and distal tip and access your target at any depth and from any angle – in plane and out-of-plane. SonixGPS* will be available as an option on SonixTOUCH Breast Imaging.



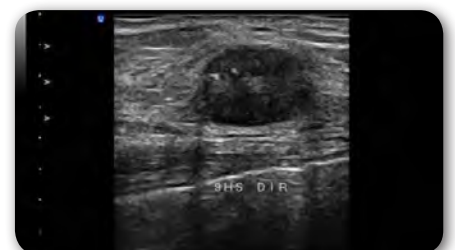
Needle Guidance – On-screen markers let you know the precise location of your needle tip.



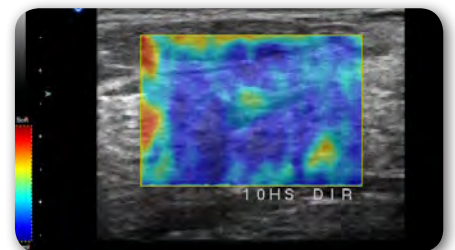
Biopsy Needles – Help increase the accuracy of biopsies by better visualizing your needle's aperture.



Cyst – Advanced imaging will help you define edges and increase image quality.



Breast Mass – Speckle reduction will help minimum noise giving you a clearer picture.



Elastography – Shows variations in tissue stiffness by use of color coded maps.

For more information:
Call 1-866-437-9508 or visit www.ultrasonix.com